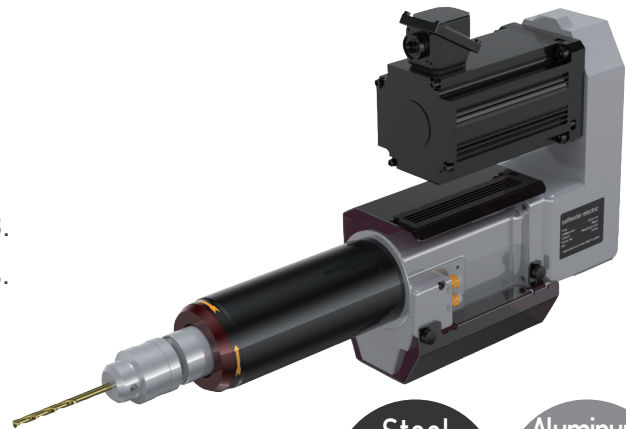


Compact, light-weight pneumatically-operated drilling units

SELFEEDER ELECTRIC

SSE4

Includes the high-torque range not covered by SSE3.
 The long stroke type is the longest in the SSE series.
 The ES4P type has been updated by replacing the induction motor with a PM motor.



Energy Saving

Global Support

Variable Rotation

Steel
 ϕ 12

Aluminum
 ϕ 16

Specifications

Supply air pressure at 0.5 MPa

Spec. Model	No-load rotation speed 75-180Hz	Spindle Torque	Rated torque range	Chucking capacity	Drilling Capacity Per Number of Spindles															Stroke		Motor Specifications			Thrust	Air Consumption	Weight	
					1-SP					2-SP					3-SP					Total stroke	Cutting feed stroke	Rated Power	Rated Rotational Speed	Rated Current				
					AL*	FC*	ST*	AL*	FC*	ST*	AL*	FC*	ST*	AL*	FC*	ST*	mm	mm	kW									min ⁻¹
SSE4-6073A	3,050	2.35	3,050 -7,300	6.5	5.5	2	2	5	2	2	4	2	2	-	-	-	-	-	-	100	0-40	1.5	3000 (150Hz)	6.1	1500	6-10	31	
SSE4-6073LA	-7,300				200	36																						
SSE4-1336A	1,500	4.78	1,500 -3,600	13	9	5	4.5	7.5	4.5	4	6.5	4	4	6	3.5	3.5	5	3	3	100								31
SSE4-1336LA	-3,600				200	36																						
SSE4-1324A	990	7.23	990 -2,380	13	12	9	8	9	7	6	7.5	5.5	5	6.5	4.5	4	5.5	3.5	3	100								31
SSE4-1324LA	-2,380				200	36																						
SSE4-1310A (with gearbox)	430	16.75	430 -1,030	13	15	13	11	10	7.5	6.5	7.5	6	5.5	7	5.5	4.5	6	4.5	3.5	100								35
SSE4-1310LA (with gearbox)	-1,030				200	40																						
SSE4-1305A (with gearbox)	210	34.03	210 -510	13	16	13.5	12	10.5	7.5	6.5	7.5	6.5	5.5	7	5.5	4.5	6	4.5	3.5	100								35
SSE4-1305LA (with gearbox)	-510				200	40																						

- Notes:
- Model selection should be based on the shape of the work, material, cutting characteristics, diameter and material of tools, rotational speed (cutting speed), etc.
 - The drilling capacity displayed in the above table is based on values representing a drilling depth of twice the diameter of the drill.
 - The standard attachment for the Hydro Speed Regulator is RB-3140. Please specify an optional Hydro Speed Regulator if required.
 (Optional Hydro Speed Regulator Models: RB-3160, R-3182A, R-31132A)
 - Make sure to use a collet chuck or spindle nose when the hardness of carbide drills and tool shanks is higher than that of general HSS (high-speed steel) drills.
 - Valveless specification is standard. If you require valve block specification (former standard specification), please order valve block ass'y separately. (Replacement to be made by customer)
 - Rated power at rotation speed higher than the rated torque range.
 - AL* : Aluminium(ADC12) FC* : Cast iron(FC200) ST* : Steel(S45C)

Dimensions (mm)

■ Dimensions

	A	B	C	D	E	F	G	H
SSE4-6073A	623	81	542	203	32	30	JT1	
SSE4-1336A SSE4-1324A	100	659	117	636	52.5	60	JT6	
SSE4-1310A SSE4-1305A	753							
SSE4-6073LA	823	81	742	303	32	30	JT1	
SSE4-1336LA SSE4-1324LA	200	859	117	836	52.5	60	JT6	
SSE4-1310LA SSE4-1305LA	953							

About Pneumatic Control Circuit

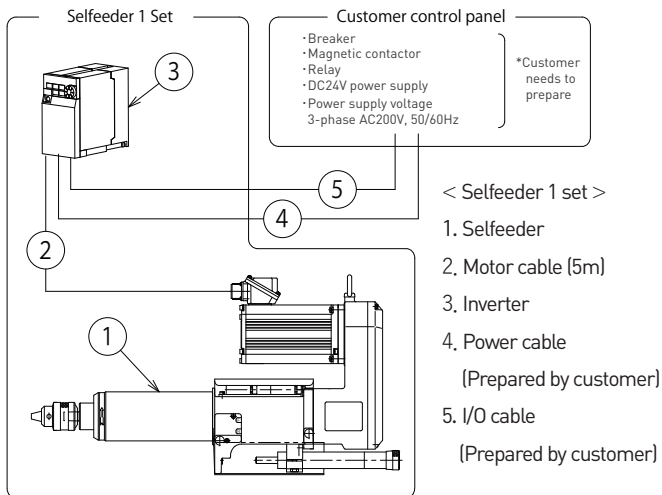
Please refer to the following QR code for the pneumatic control circuit to control the forward/reverse movement and speed of the Selffeeder.

Notes

- Supply clean air of 0.5 to 0.6 MPa to the Selffeeder.
- Air equipment up to the air supply port should be prepared by the customer.
- Use a meter-in flow control valve.
- When using the unit at an angle downward or vertical downward, install a pneumatic control circuit specialized to prevent the ram from falling.

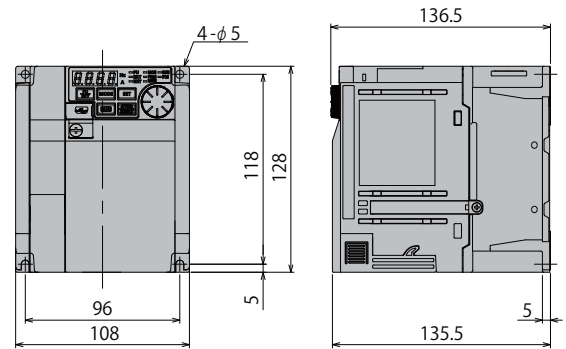
For more info

Configuration diagram



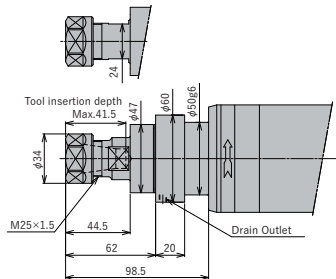
Inverter

FR-E820-1.5K



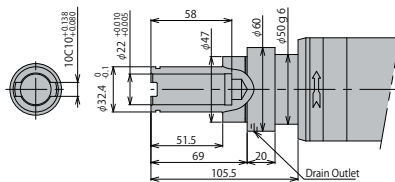
Tip shape

- Collet chuck / spindle nose (option)
Model No.: ER20 or equivalent
(chucking range $\phi 1$ to $\phi 13$)



- Note:
1. Detailed dimensions of spindle tip are as recommended for REGO-FIX ER collets.
 2. Collet, collet nut, and wrench are not included. Please order separately.
 3. When installing the Selffeeder <Electric> horizontally, the drain outlet must face downwards.

- Adjustable Spindle Nose (option)
Model No.: KH-22E



- Note:
1. Detailed dimensions of spindle nose are as recommended by NT Tool Co.
 2. KH-E type spindle nose is applicable to NT Tool's quick-change stub holders KH-A / KH-E type.
 3. Adjustable spindle nose is not applicable for Selffeeder <Electric> with no-load rotation speed exceeding 5,000min⁻¹.
 4. When installing the Selffeeder <Electric> horizontally, the drain outlet must face downwards.

I/O Signal Specifications

I/O	Signal	Name
Input	STF	Unused
	STR	Spindle ON
	RH	Multi-step spd (1 to 15 spd) Freq set range 75 to 180Hz Can be set in 7.5Hz increments
	RM	
	RL	
	MRS (REX)	
RES	Reset	
Output	A	Abnormal Output(Relay) Normally-open contact
	B	Abnormal Output(Relay) Normally-closed contact
	RUN	In operation
	FU	Freq detection

Options

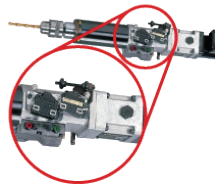
■ Hydro-speed regulator

A hydraulic feed speed control unit that can adjust the feed rate of an air cylinder to any desired speed. For details, please refer to our web page.



■ Operate Signal Kit

This kit is designed to accurately detect the operation of a Selffeeder and control synchronized operation with other devices. For details, please refer to our web page.



■ Multi-spindle head

Various multi-spindle heads are available. For details, please refer to our web page.



For more information about our products, please visit our website. ▶▶



SUGINO
SUPER! TECHNOLOGY

SUGINO MACHINE LIMITED
www.sugino.com

Olinas Tower Bldg., 8th floor, 4-1-3 Taihei, Sumida-ku,
Tokyo, 130-0012 JAPAN
TEL +81-3-5619-5760 FAX +81-3-5619-5765
✉ export@sugino.com

- Specifications in this catalog are subject to change without prior notice for further improvement.
- When exporting this product overseas, please follow the export control procedures based on Japan's Foreign Exchange and Foreign Trade Law.
- SUGINO, SUGINO, and SELFFEEDER are trademarks or service marks of Sugino Machine Limited in Japan or foreign countries.
- The content of this catalog is as of January 2024.
- Any unauthorized use, copying or reprinting of the contents or part thereof in this catalog is prohibited.