

Compact, light-weight pneumatically-operated drilling units

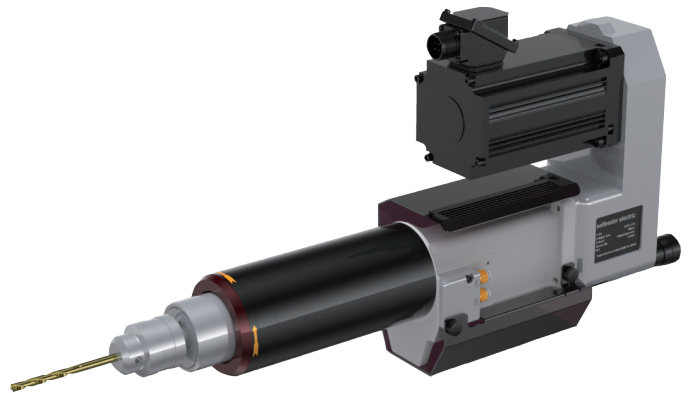
SELFEEDER ELECTRIC

SSE5

Includes a higher thrust range than SSE4.

Multi-spindle head can also be supported up to 6 spindles.

The ES5 type has been updated by replacing the induction motor with a PM motor.



Energy Saving

Global Support

Variable Rotation

Steel
 ϕ 13

Aluminum
 ϕ 19

Specifications

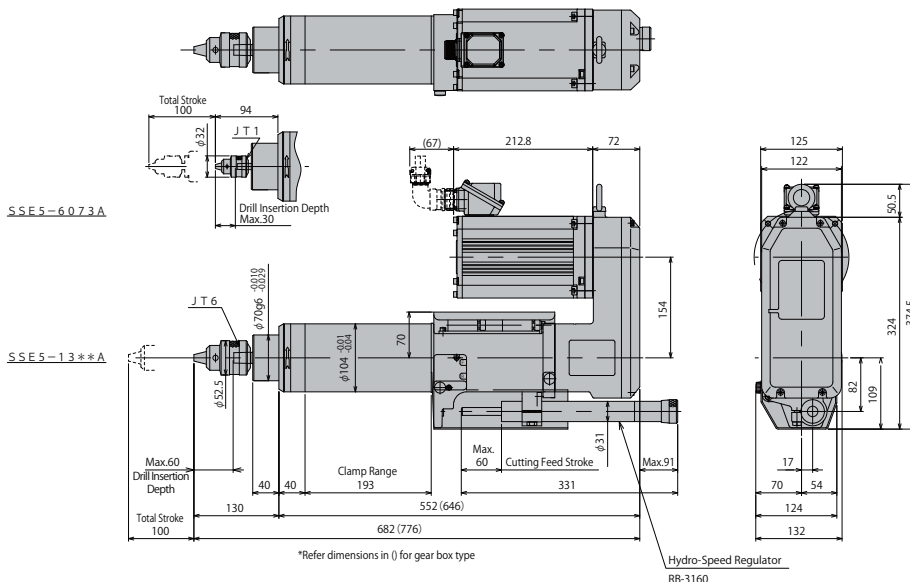
Supply air pressure at 0.5 MPa

Spec.	No-load rotation speed 75-180 Hz	Spindle Torque	Rated torque range	Chucking capacity	Drilling Capacity Per Number of Spindles																		Stroke		Motor Specifications				Thrust	Air Consumption	Weight
					1-SP		2-SP		3-SP		4-SP		5-SP		6-SP		Total stroke	Cutting feed stroke	Rated Power	Rated Rotational Speed	Rated Current										
Model	min ⁻¹	N·m	min ⁻¹	mm	AL*	FC*	ST*	AL*	FC*	ST*	AL*	FC*	ST*	AL*	FC*	ST*	AL*	FC*	ST*	mm	mm	kW	min ⁻¹	A	N	L/Stroke	kg				
SSE5-6073A	3,050 -7,300	2.35	3,050 -6,100	6.5	5.5	2	2	5	2	2	4	2	2	-	-	-	-	-	-	-	100	0-60	1.5	3000 (150Hz)	6.1	2000	7-12	36			
SSE5-1336A	1,500 -3,600	4.78	1,500 -3,000	13	11	5	4.5	8	5	4.5	7	4	4	6.5	4	4	6	3.5	3.5	5.5	3.5	3.5	100	0-60	1.5	3000 (150Hz)	6.1	2000	7-12	40	
SSE5-1324A	990 -2,380	7.23	990 -1,980		13	10	9	10	7	6	8	6	5.5	6.5	5	4	6.5	4	3.5	5.5	3.5	3.5									
SSE5-1310A (with gearbox)	430 -1030	16.75	430 -860		17	14	12.5	12	9	7	10	7	6	8	6	5	7	6	5	7	5	4									
SSE5-1305A (with gearbox)	210 -510	34.03	210 -420	19	16	13	13	9	7.5	10	7	6.5	8	6	5	7	6	5	7	5	4										

Notes:

- Model selection should be based on the shape of the work, material, cutting characteristics, diameter and material of tools, rotational speed (cutting speed), etc.
- The drilling capacity displayed in the above table is based on values representing a drilling depth of twice the diameter of the drill.
- The RB-3160 comes standard with a Hydro Speed Regulator. A Hydro Speed Regulator is available as an option upon request.
(Optional Hydro Speed Regulator models are: RB-3140, R-3182A, and R31132A)
- Make sure to use a collet chuck or spindle nose when the hardness of carbide drills and tool shanks is higher than that of general HSS (high-speed steel) drills.
- Valveless specification is standard. If you require valve block specification (former standard specification), please order valve block ass'y separately. (Replacement to be made by customer)
- AL* : Aluminium(ADC12) FC* : Cast iron(FC200) ST* : Steel(S45C)

Dimensions (mm)



About Pneumatic Control Circuit

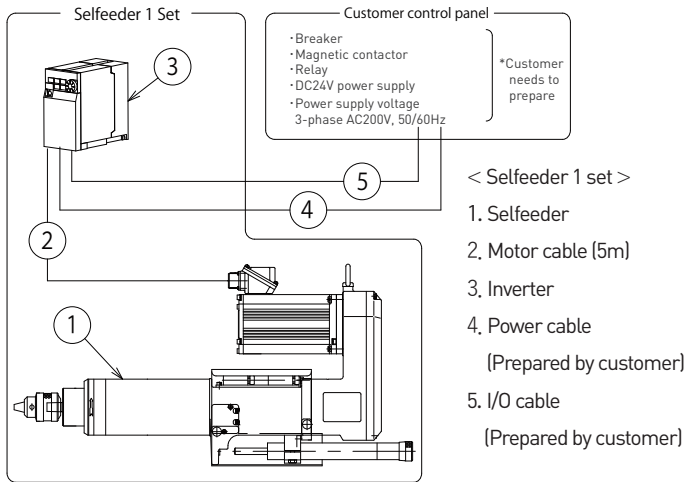
Please refer to the following QR code for the pneumatic control circuit to control the forward/reverse movement and speed of the Selffeeder.

Notes

- Supply clean air of 0.5 to 0.6 MPa to the Selffeeder.
- Air equipment up to the air supply port should be prepared by the customer.
- Use a meter-in flow control valve.
- When using the unit at an angle downward or vertical downward, install a pneumatic control circuit specialized to prevent the ram from falling.

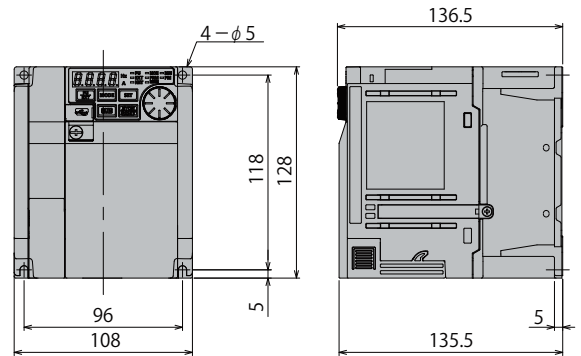
For more info

Configuration diagram



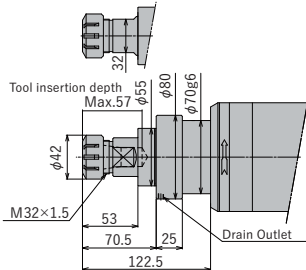
Inverter

FR-E820-1.5K



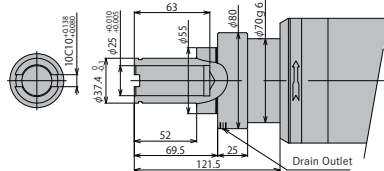
Tip shape

- Collet chuck / spindle nose (option)
Model No.: ER25 or equivalent
(chucking range $\phi 1$ to $\phi 16$)



- Note:
1. Detailed dimensions of spindle tip are as recommended for REGO-FIX ER collets.
 2. Collet, collet nut, and wrench are not included. Please order separately.
 3. When installing the Selffeeder <Electric> horizontally, the drain outlet must face downwards.

- Adjustable Spindle Nose (option)
Model No.: KH-25E



- Note:
1. Detailed dimensions of spindle nose are as recommended by NT Tool Co.
 2. KH-E type spindle nose is applicable to NT Tool's quick-change stub holders KH-A / KH-E type.
 3. Adjustable spindle nose is not applicable for Selffeeder <Electric> with no-load rotation speed exceeding 5,000min⁻¹.
 4. When installing the Selffeeder <Electric> horizontally, the drain outlet must face downwards.

I/O Signal Specifications

I/O	Signal	Name
Input	STF	Unused
	STR	Spindle ON
	RH	Multi-step spd (1 to 15 spd) Freq set range 75 to 180Hz Can be set in 7.5Hz increments
	RM	
	RL	
	MRS (REX)	
RES	Reset	
Output	A	Abnormal Output(Relay) Normally-open contact
	B	Abnormal Output(Relay) Normally-closed contact
	RUN	In operation
	FU	Freq detection

Options

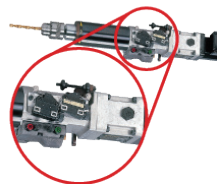
■ Hydro-speed regulator

A hydraulic feed speed control unit that can adjust the feed rate of an air cylinder to any desired speed.
For details, please refer to our web page.



■ Operate Signal Kit

This kit is designed to accurately detect the operation of a Selffeeder and control synchronized operation with other devices.
For details, please refer to our web page.



■ Multi-spindle head

Various multi-spindle heads are available.
For details, please refer to our web page.



For more information about our products, please visit our website. ▶▶



SUGINO
SUPER! TECHNOLOGY

SUGINO MACHINE LIMITED
www.sugino.com

Olinas Tower Bldg., 8th floor, 4-1-3 Taihei, Sumida-ku,
Tokyo, 130-0012 JAPAN
TEL +81-3-5619-5760 FAX +81-3-5619-5765
✉ export@sugino.com

- Specifications in this catalog are subject to change without prior notice for further improvement.
- When exporting this product overseas, please follow the export control procedures based on Japan's Foreign Exchange and Foreign Trade Law.
- SUGINO, SUGINO, and SELFFEEDER are trademarks or service marks of Sugino Machine Limited in Japan or foreign countries.
- The content of this catalog is as of January 2024.
- Any unauthorized use, copying or reprinting of the contents or part thereof in this catalog is prohibited.