

Mechanical feed tapping unit

SYNCHROTAPPER

SSTC

Rapid feed and rapid return shorten cycle time.
 Long stroke type avoids interfering with peripheral equipment such as fixtures.
 The STC type has been renewed by replacing induction motor with a PM motor.



Energy Saving

Global Support

Steel
M16

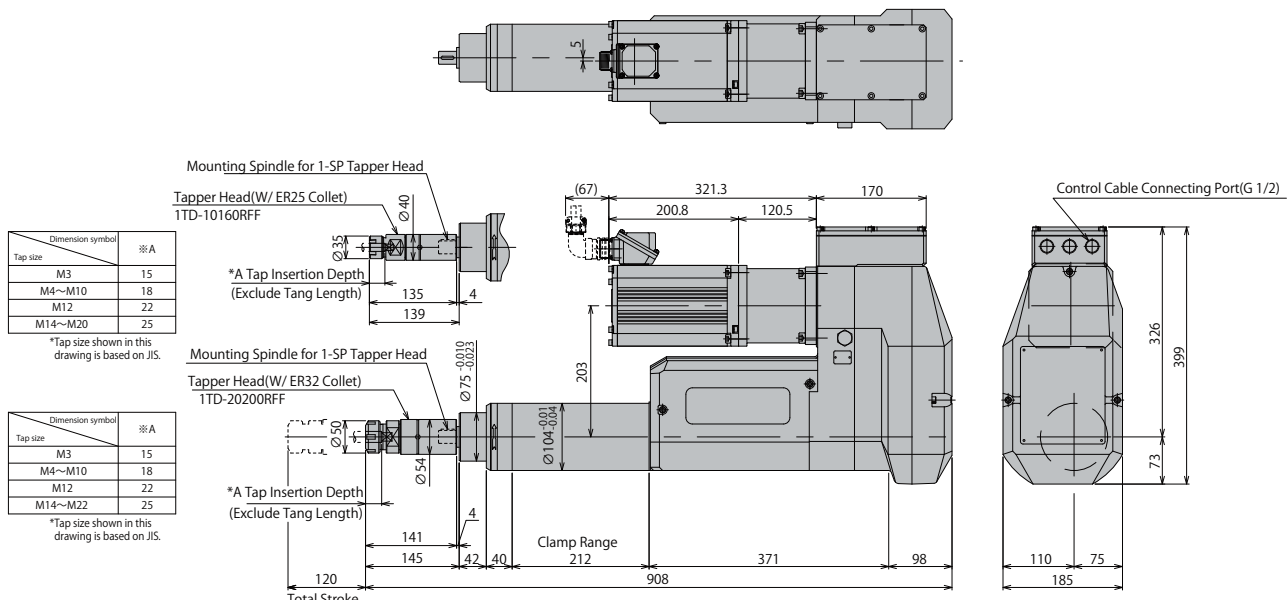
Aluminum
M22

Specifications

Specifications	No-load rotation speed 90Hz	Spindle Torque	Tapping Capacity								Stroke			Fast approach 90Hz	Maximum tapping cycletime per minute	Motor Specifications			Thread Pitch		Weight
			1-SP		2-SP		3-SP		4-SP		Total stroke	Fast approach stroke	Pitch feed stroke			Rated Power	Rated Rotational Speed	Rated Current	mm	Threads/inch	
			Aluminium (ADC12)	Steel (S45C)	Aluminium (ADC12)	Steel (S45C)	Aluminium (ADC12)	Steel (S45C)	Aluminium (ADC12)	Steel (S45C)											
Model number	min ⁻¹	N·m																			
	720	11.91	M14	M8	M12	M8	M10	M6	M8	M5	20~120	30~110	0~40	100	10	1.5	3000 (150Hz)	6.1	40	19	
	490	17.55	M18	M14	M14	M10	M12	M8	M10	M6									0.5	1.5	
0.7																			1.75		
250	34.14	M22	M16	M16	M12	M14	M10	M12	M8	0.8	2.0										
										1.0	2.5										
										1.25	3.0	26	12								
																	24	11			
																	20				

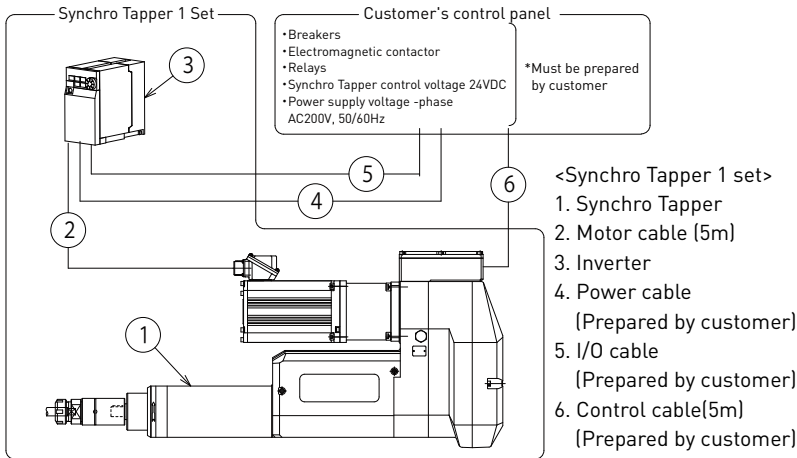
- Notes:
- Regarding the two-step description of tapping capacity per number of spindle, a spiral tap or a point tap is used for the upper column of the tapping capacity chart and hand tap No.2 is used for the lower column. In addition, tapping depth is a value of 1.5 times the screw diameter.
 - The allowance weight for the installable multi-spindle attachments is as follows: Waterproof and dust-proof measures for the Synchro Tapper main body are required for upward processing. For more information, please contact your nearest sales office.
 (Sideways processing: 35 kg, Upward processing: 25 kg, Downward processing: 25 kg)

Dimensions (mm)



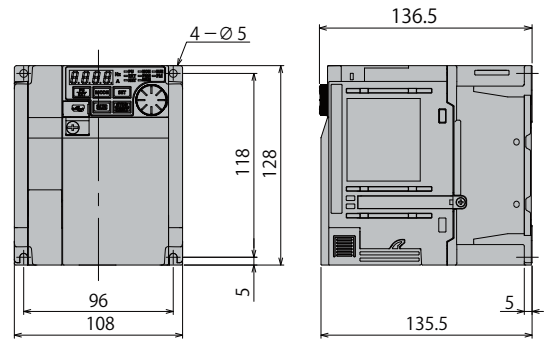
- Note:
- Radial floating amount is 0.4mm in diameter for Tapper Head 1TD-1016ORFF and 1TD-2020ORFF.
 - Tap insertion depth *A may change dimension per tap size

Configuration diagram



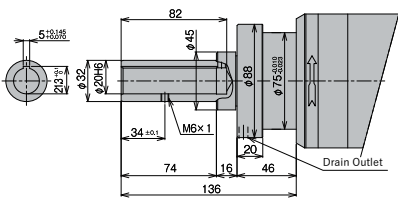
Inverter

FR-E820-1.5K

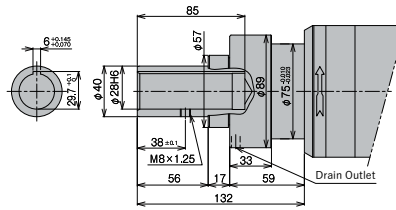


Tip shape

■ Adjustable spindle nose (optional)
Model: Bilz 20



■ Adjustable spindle nose (optional)
Model: Bilz 28



Notes:
1. Detailed dimensions of spindle nose are as recommended by NT Tool Co.
2. Bilz type spindle nose is applicable to adjustable adapters manufactured by NT Tool Co.
3. When installing the Synchro Tapper horizontally, the drain outlet must face downward.

I/O Signal Specifications

I/O	Signal	Name
Input	STF	Normal rotation (forward)
	STR	Reversal (reverse)
	RH	Unused
	RM	Unused
	RL	Unused
	MRS	Output stop
	RES	Reset
Output	A	Abnormal Output(Relay) Normally-open contact
	B	Abnormal Output(Relay) Normally-closed contact
	RUN	In operation
	FU	Freq detection

Option

■ Multi-spindle head

Various multi-spindle heads are available.
For details, please refer to our web page.



■ Tapper Head

Various tapper heads are available.
For details, please refer to our web page.



■ Controller

A controller dedicated to Synchro Tapper is available.
Please contact our nearest sales office for details.



For more information about our products, please visit our website. ▶▶



SUGINO
SUPER! TECHNOLOGY

SUGINO MACHINE LIMITED
www.sugino.com

Olinas Tower Bldg., 8th floor, 4-1-3 Taihei, Sumida-ku,
Tokyo, 130-0012 JAPAN
TEL +81-3-5619-5760 FAX +81-3-5619-5765
✉ export@sugino.com

- Specifications in this catalog are subject to change without prior notice for further improvement.
- When exporting this product overseas, please follow the export control procedures based on Japan's Foreign Exchange and Foreign Trade Law.
- **SUGINO**, **SUGINO** and **SYNCHROTAPPER** are trademarks or service marks of Sugino Machine Limited in Japan or foreign countries.
- The content of this catalog is as of January 2024.
- Any unauthorized use, copying or reprinting of the contents or part thereof in this catalog is prohibited.