

Mechanical feed/electronically controlled drilling unit

SELFEEDER VARIMEC

SSV2M

Varimec's smallest model equipped with a high-speed, high-power and high-performance motor in a small, compact body.

Demonstrates its power in machining small parts and machining small diameter holes.

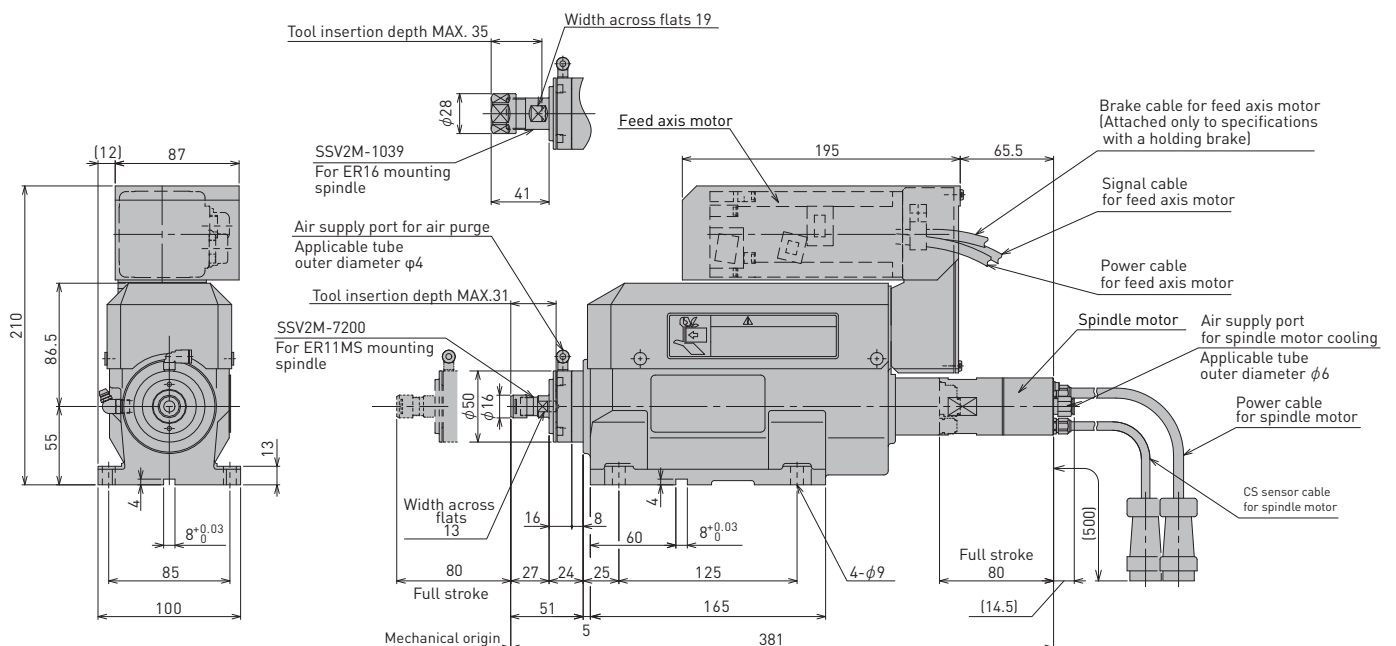


Specifications

| Model number | No-load rotation speed min ⁻¹ | Spindle tip shape (collet chuck) | Chucking capacity mm | Maximum drilling capacity | | | Stroke mm | Spindle motor kW | Feed axis motor kW | Thrust N | Rapid traverse speed mm/sec | Weight kg |
|--------------|---|----------------------------------|-------------------------|---------------------------|-------------------------|--------------------|--------------|--|-----------------------|-------------|--------------------------------|--------------|
| | | | | Aluminum (ADC12) mm | Cast iron (FC200) mm | Steel (S45C) mm | | | | | | |
| SSV2M-7200 | 2,000~20,000 | ER11MS | 0.5~7.0 | 5 | 4 | 3.5 | MAX.80 | 0.9 (at 15,000min ⁻¹) DC brushless motor | 0.4 AC servo motor | 1,200 | Max. 200 | 15 |
| SSV2M-1039 | 390~3,900 | ER16 | 0.5~10.0 | 8.5 | 7.5 | 6.5 | | | | | | |

- Notes
1. The selection of models should be based on the shape of the workpiece, material, cutting characteristics, diameter and material of tools, rotation speed (cutting speed), etc.
 2. The drilling capacity displayed in the above table is based on values representing a drilling depth of two times the diameter of the drill.
 3. For servo motor with holding brake (optional) specifications, make sure to add a "B" to the end of the model number.

Dimensions(mm)



Note: Be sure to supply dry air to the spindle motor cooling air (supplied air pressure: 0.3MPa) and air purge air (supplied air pressure: 0.05MPa).

SELFEEDER

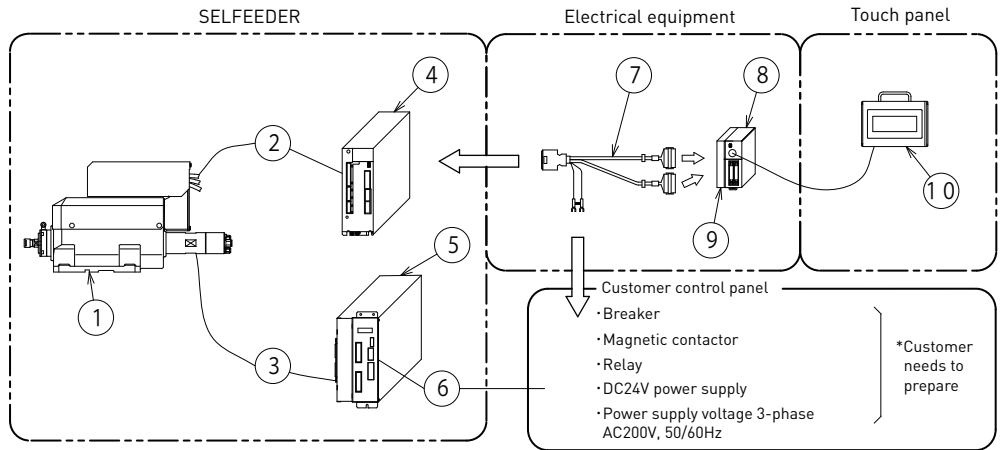
1. SELFEEDER
2. Feed axis cable(5m)
3. Spindle cable(5m)
4. Feed axis servo amplifier [with ABS battery]
5. Spindle inverter
6. In-panel cable for spindle(0.7m)

Electrical equipment

7. I/O cable(1.5m)
8. Sequencer
9. Analog output unit

Touch panel

10. Touch panel TP-02A [with cable(3m)]



4. Feed axis servo amplifier [with ABS battery]
MR-J4-40A[battery : MR-BAT6V1SET]

Weight 1.0kg Power capacity 0.9kVA

5. Spindle inverter UC-93

Weight 3.2kg Power capacity 3.6kVA

8,9. Sequencer(with Analog output unit)
FX3UC-32MT/D(FX3U-3A-ADP)

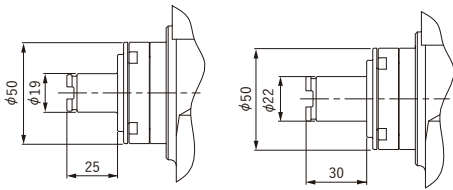
[Mounting]
35mm width DIN rail mounting Weight 0.3kg

Note: Dedicated parameters and software for controlling the Selffeeder are input to the attached feed axis servo amplifier and sequencer.

Tip shape

■ Adjustable spindle nose (optional)

SSV2M-7200 KH-12E SSV2M-1039 KH-14E



- Notes 1. The KH-E type spindle nose is applicable to NT Tool quick change stub holders KH-A and KH-E types.
2. If the rotational speed exceeds 10,000min⁻¹, the quick change stub holder is not applicable.

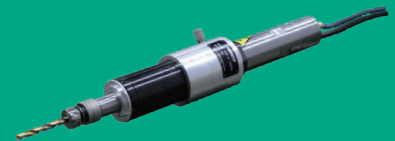
I/O signal specifications

| Input/Output | Signal name | Name |
|--------------|-------------|-----------------------------------|
| Input *1 | X06 | A-axis operation preparation |
| | X07 | A-axis spindle alarm |
| | X10 | A-axis automatic start |
| | X11 | A-axis mechanical origin return |
| | X12 | A-axis error reset |
| | X13 | A-axis EXT/MANUAL |
| | X14 | A-axis program selection 1 |
| | X15 | A-axis program selection 2 |
| | X16 | A-axis program selection 4 |
| | X17 | A-axis program selection 8 |
| Output *2 | Y12 | A axis during automatic operation |
| | Y13 | A-axis program end |
| | Y14 | A-axis machine origin |
| | Y15 | A-axis Spindle ON |
| | Y16 | A-axis error |
| | Y17 | A-axis emergency stop condition |

*1 Voltage: DC24V, Current: 7mA
*2 Voltage: DC24V, Current: 100mA

We also sell

"High-speed spindle motors"
that use only spindle motors.



Application example

1. Drilling and end milling in combination with a slide unit
2. His deburring process in combination with a robot
3. Various cutting processing by mounting on a dedicated machine